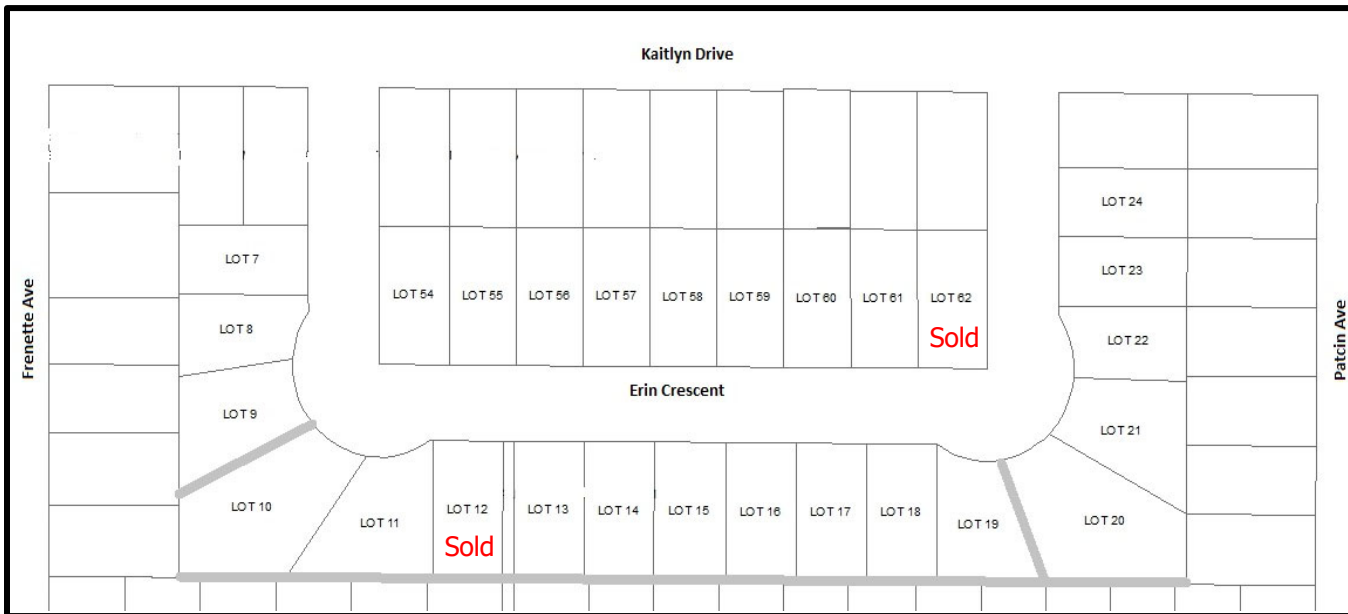


ERIN CRESCENT SUBDIVISION

RESIDENTIAL LOTS - FOR SALE



LOT PRICES

Lot 22	\$	46,900.00
Lot 8	\$	47,600.00
Lots 7, 23, 24	\$	48,400.00
Lots 55 - 61	\$	49,800.00
Lots 12 - 18, 54, 62	\$	52,000.00
Lot 19	\$	57,700.00
Lot 9	\$	60,600.00
Lot 21	\$	65,700.00
Lot 11	\$	72,200.00
Lot 10	\$	82,800.00
Lot 20	\$	86,400.00

*easement along South side of lots 10-20

*easement between lots 9 and 10

*easement between lots 19 and 20

*prices above do not include HST

CONTACT:

Gabrielle Lecuyer, AOMC, Dipl. M.A.

Municipal Clerk

807-274-5323, Extension 1215

glecuyer@fortfrances.ca



www.fortfrances.ca