

July 28, 2025

## Request for Quotation

### Nelson Street Sidewalk Construction

---

The Town of Fort Frances is looking for a construction firm to complete a sidewalk extension along Nelson Street from Victoria Avenue to the Municipal Parking Lot. The sidewalk will traverse along the south side of the roadway connecting into the existing sidewalk at the intersection of Nelson Street and Victoria Avenue and terminating approximately 54m westerly at the municipal parking lot with a new drop curb and tactile plate.

The Town is looking for a contractor to complete the following scope of works:

1. Layout the sidewalk within the municipal boulevard including grading new sidewalk to shed water.
2. Excavate new sidewalk removing existing organic materials.
3. Place a minimum of 300mm of granular A complete with water aided compaction over the length.
4. Form sidewalk per OPSD 310.010 including added reinforcement at any driveway crossing comprised of 150x150 welded wire mesh. Sidewalk to be 1.3m thick, 150mm at driveways.
5. Remove and replace curb at the intersection of the new sidewalk and the existing parking lot with a drop curb making good any damages to the asphalt surface of the parking lot entrance. The sidewalk shall be sloped to meet the grade of the parking lot and contain tactile indicator pads per OPSD 310.039.
6. Place concrete for the length of the sidewalk edging the new sidewalk and finishing to a broom finish. Expansion/crack control joints and dummy joints shall be installed per OPSD 310.010.
7. Contractor shall monitor the sidewalk to ensure no persons tamper with it through the curing process.
8. After stripping forms, the excavation shall be cleaned of deleterious concrete, form works, etc. and be topped with topsoil and seed. Seed shall be cared for as outlined in the specifications and other provisions.

Further information can be found regarding specifics of the installation can be found in the attached specifications and other provisions.

Contractors are to obtain all necessary permits and approvals including locates. The contractor is responsible for application for a building permit, however there will be no cost for such permit.

Contractor to liaise with the property owner of the adjacent property to coordinate access around the installation.

Contractors shall carry the following insurances and shall provide proof of such to the Town.

**Commercial General Liability:**

The Proponent shall, at their expense obtain and keep in force during the term of the Agreement, Commercial General Liability Insurance satisfactory to the Town of Fort Frances and underwritten by an insurer licensed to conduct business in the Province of Ontario. The policy shall provide coverage for Bodily Injury, Property Damage and Personal Injury and shall include but not be limited to:

- a. A limit of liability of not less than \$2,000,000/occurrence with an aggregate of not less than \$2,000,000
- b. Add the Town of Fort Frances as an additional insured with respect to the operations of the Named Insured
- c. The policy shall contain a provision for cross liability and severability of interest in respect of the Named Insured
- d. Non-owned automobile coverage with a limit not less than \$2,000,000 and shall include contractual non-owned coverage (SEF 96)
- e. Products and completed operations coverage
- f. Broad Form Property Damage
- g. Contractual Liability
- h. Work performed on Behalf of the Named Insured by Sub-Contractors
- i. The policy shall provide 30 days prior notice of cancellation

**Automobile Insurance:**

Standard Form Automobile Liability Insurance that complies with all requirements of the current legislation of the Province of Ontario, having an inclusive limit of not less than \$2,000,000 per occurrence for Third Party Liability, in respect of the use or operation of vehicles owned, operated or leased by the Proponent.

**Primary Coverage:**

The proponent's insurance shall be primary coverage and not additional to and shall not seek contribution from any other insurance policies available to the municipality.

**Certificate of Insurance:**

The proponent shall provide a Certificate of Insurance evidencing coverage in force at least 10 days prior to contract commencement.

The Contractor shall defend, indemnify and save harmless the Town of Fort Frances its elected officials, officers, employees and agents from and against any and all claims of any nature, actions, causes of action, losses, expenses, fines, costs (including legal costs), interest or damages of every

nature and kind whatsoever, including but not limited to bodily injury, sickness, disease or death or to damage to or destruction of tangible property including loss of revenue or incurred expense resulting from disruption of service, arising out of or allegedly attributable to the negligence, acts, errors, omissions, misfeasance, nonfeasance, fraud or willful misconduct of the Supplier, its directors, officers, employees, agents, contractors and subcontractors, or any of them, in connection with or in any way related to the delivery or performance of this work. This indemnity shall be in addition to and not in lieu of any insurance to be provided by the Contractor in accordance with this Contract and shall survive this Contract.

The Contractor agrees to defend, indemnify, and save harmless the Town of Fort Frances from and against any and all claims of any nature, actions, causes of action, losses, expenses, fines, costs (including legal costs), interest or damages of every nature and kind whatsoever arising out of or related to the Supplier's status with WSIB. This indemnity shall be in addition to and not in lieu of any proof of WSIB status and compliance to be provided by the Supplier in accordance with this Contract and shall survive this Contract.

Quotations shall be completed on the attached costing table and submitted by email to [trob@fortfrances.ca](mailto:trob@fortfrances.ca) no later than **4:00pm Fort Frances Local Time, August 15, 2025**

#### OPERATIONS & FACILITIES DIVISION

Travis Rob, P.Eng  
Manager of Operations and Facilities  
O: (807)274-9893 ext 1316  
C: (807)275-9757  
[trob@fortfrances.ca](mailto:trob@fortfrances.ca)

## **REQUEST FOR QUOTATION SPECIFICATIONS AND OTHER PROVISIONS:**

The Town is relying on OPS MUNI 100 November 2006 Specifications for the completion of this work. In addition, the following sections are attached and form part of the contract documents:

- Section 01561 – Environmental Protection
- Section 02510 – Roads, Sidewalks and Appurtenances
- Section 02520 – Excavation and Grading
- Section 02930 – Finish Grading and Sodding

### **MEASUREMENTS FOR PAYMENT**

- A. Notify the Consultant, sufficiently in advance of operations to allow required measurements for payment. Unless otherwise specified, measurements will be taken in the horizontal plane, and in accordance with the General & Supplementary General Conditions.

### **UNIT PRICES**

- A. Unit prices included in the Agreement and submitted as part of the tender are to be based on units of measurement specified in the bidding documents and are to include for labour, materials, preparation of shop drawings, delivery, handling, disposal of surplus material, overhead and profit, and any other direct or indirect expenditures of such work measured complete in place, and as further specified in the Contract Documents.
- B. Unit prices for specified units of measurement are to apply to all work that can be measured in the said units regardless of the variations in productivity and job conditions, or the time when instructions to perform such work are issued.
- C. Unit prices are to apply only to the net change in quantities for each unit of work in each change to the Work, if the instructions to change have been given before the start of the Work and/or the ordering of Products.
- D. After the Work has been started, the unit prices are to cover the new work without any credit for the work already completed. Work completed and to be removed to accommodate new work will be paid for as described for Changes in the Work in the General Conditions as a lump sum or by cost and fixed or percentage fee basis.
- E. Unit prices for "CREDIT" are not to be less than 85% of unit prices for "EXTRA".
- F. Submit unit prices as described on the proper tender form appendix.

### **EXISTING UTILITIES**

- A. Contact the various utility companies prior to commencing Work and become informed of the exact location of utilities and protect them during construction and assume liability for

damage to utilities.

- B. Utilities that require relocation will be the responsibility of the Utility Company concerned at no expense to the Contractor. Cooperate with the utility companies concerned and always provide them free access to their plant.
- C. Support existing pipes, ducts, or other underground services that intersect the pipe trench, or support the pipe trench in a manner acceptable to the Consultant and the Utility Company.
- D. Where existing overhead pole lines are adjacent to the excavation, temporarily support them to the approval of the Consultant and the Utility Company concerned.

## TEMPORARY ACCESS

- A. Where necessary for access, provide and maintain suitable safe, temporary roads, walkways and bridges. Remove temporary access facilities and restore disturbed areas, after the Work of the Contract has been completed.

## DUST & MUD CONTROL

- A. The Contractor shall ensure that his dust and mud control procedures are effective, sufficient, in force, and to the satisfaction of the Town of Fort Frances. As the work progresses, the Contractor shall clean up the streets and again at the completion of the construction works. All streets on which work has been done, or materials hauled, shall be left 'clean'. The Contractor shall be responsible for daily cleaning all asphalt surfaces which have been muddied, or littered with debris, during the construction operations.
- B. The Town of Fort Frances reserves the right, without prior notice to the Contractor, to provide additional dust control measures, or street clean-up, or grading, as may be required, as a result of these construction works, and to deduct the cost of such works from the payment due to the Contractor.

## CLEAN-UP AND TIDY CONDITION

- A. On a daily basis, as the Work progresses, and on completion of the Work, clean up and remove the rubbish and debris from the site. Remove excess material that is not required to be left on the site by the conditions of the Contract.
- B. Keep the site and the Work as tidy as practicable at all times.

## SECTION 01561 – ENVIRONMENTAL PROTECTION

### 1.0 GENERAL

#### 1.1 SCOPE

1.1.1 This Section covers the work for the protection of the environment during construction.

1.1.2 The provisions of this Section are in addition to the provisions of other Sections of this Contract.

#### 1.2 SITE WORKING AREAS

1.2.1 Confine operations to limits of the site working area shown on Drawings.

1.2.2 Provide access roads to the site working area and on the site in locations shown or otherwise acceptable to the Contract Administrator.

1.2.3 Install fencing suitable to the Engineer to clearly define the working limits to the site working area, haul routes, parking areas, access routes and maintenance areas to ensure all activity is confined to these areas.

#### 1.3 CODES AND STANDARDS

1.3.1 The Contractor shall follow the “Environmental Construction Guidelines” for Municipal, Road, Sewage and Water Projects; 1987 by the Municipal Engineers Association. These Guidelines recommend construction procedures that are considered to be sound environmental practice for the following areas of concern:

- i. Construction Works Yard and Access Routes
- ii. Equipment Fueling, Maintenance and Storage
- iii. Mud, Dust and Particulate Control
- iv. Noise and Vibration Control
- v. Drilling and Blasting
- vi. Protection of Land Features and Vegetation
- vii. Clearing Right-of-Way / Disposal of Excess Material
- viii. Site Drainage and Erosion Control
- ix. De-watering
- x. Water Crossings and Construction through Sensitive Areas
- xi. Groundwater and Well
- xii. Hydrostatic Testing and Disinfection
- xiii. Site Restoration

1.4 ARCHAEOLOGY

1.4.1 During the performance of the work, have regard to the requirements of the Ontario Heritage Act, RSO 1980, Chapter 59, and the Cemeteries Act; RSO 1980, Chapter 337.

1.4.2 If any archaeological and historical resources are discovered during the performance of the work, the performance of the work in the area of the discovery is to halt. Notify the Ministry of Tourism, Culture and Recreation, Archaeology & Heritage Planning Branch, for an assessment of the discovery. Do not resume work in the area of the discovery until cleared to do so by the Ministry.

1.4.3 If the Work is delayed by archaeological discoveries or the Contractor is required to assist in an archaeological investigation, compensation will be paid the Contractor in accordance with the General Conditions.

1.5 SITE RESTORATION

1.5.1 In general, the Contractor shall restore the site to conditions equal to or, if specified elsewhere, to a condition better than existing conditions.

1.5.2 The Contractor shall restore lands outside of the limits of the Work which are disturbed by the Work to their original condition.

1.6 SPILLS REPORTING

1.6.1 In the event of a spill or other emission of a pollutant into the natural environment, every person responsible for the emission of who causes or permits it must forthwith notify:

- i. the Ministry of Environment (Tel. 1-800-268-6060);
- ii. the municipality or the regional municipality within the boundaries of which the spill occurred;
- iii. the owner of the pollutant, if known;
- iv. the person having control of the pollutant, if known; and
- v. the Contract Administrator of the spill, of the circumstances thereof, and of the action taken or intended to be taken with respect thereto.

1.7 CONTINGENCY PLAN

1.7.1 Prior to commencing construction, the Contractor shall prepare a contingency plan for the control and clean-up of a spill. The Contractor shall submit for the Contract Administrator's review and the review of other responsible Parties a copy of the Contingency Plan and make appropriate changes to it based on review comments received. The plans shall be reviewed at the pre-construction meeting. The contingency plan shall include:

- i. the names and the telephone numbers of the persons in the local
- SECTION 01561 - ENVIRONMENTAL PROTECTION

municipalities to be notified forthwith of a spill;

- ii. the names and the telephone numbers of the representatives of the fire, the police and the health departments of the local municipalities who are responsible to respond to emergency situations;
- iii. the names and the telephone numbers of the companies experienced in the control and cleanup of hazardous materials that would be called upon in an emergency involving a spill;
- iv. the Contractor's proposal for the immediate containment and control of the spill, the cleanup procedures to be initiated immediately and any other action to be taken to mitigate the potential environmental damage while awaiting additional assistance; and
- v. the name and the office and home telephone number of the Contractor's representative responsible for preparing, implementing, directing and supervising the contingency plan.

#### 1.8 DISPOSAL OF WASTES

- 1.8.1 Fires and burning of rubbish on site are not permitted.
- 1.8.2 Do not bury rubbish and waste materials on site unless reviewed by the Contract Administrator.
- 1.8.3 Do not dispose of waste or volatile materials, such as mineral spirits, oil or paint thinner into waterways, storm or sanitary sewers.

#### 1.9 SITE CLEARING AND PLANT PROTECTION

- 1.9.1 Protect trees and plants on site and adjacent properties where indicated.
- 1.9.2 Protect roots of designated trees to dripline during excavation and site grading to prevent disturbance or damage.
- 1.9.3 Avoid unnecessary traffic, dumping and storage of materials over root zones.
- 1.9.4 Operate equipment to prevent damage to trees; do not permit heavy equipment to travel over roots within the drip zone of any trees.
- 1.9.5 Minimize stripping of topsoil and vegetation.
- 1.9.6 Where tree pruning is required and the Contractor is authorized to carry out the activity, comply with ANSI Specification A300 and prune to provide a vertical clearance of 4m over streets and 2.5m over sidewalks.

- 1.9.7 Temporarily tie back branches in lieu of pruning where practical.
  - 1.9.8 Avoid pruning limbs greater than 10 cm in diameter, where practical, except for dead limbs.
  - 1.9.9 Restrict tree removal to areas indicated or designated by Contract Administrator.
  - 1.9.10 Notify the Contract Administrator of any damaged trees.
  - 1.9.11 Provide remediation action to damaged trees using a qualified tree service. Submit the remedial program recommended by the tree service to the Contract Administrator for approval.
  - 1.9.12 If a tree not scheduled for removal is damaged beyond repair, replace the tree with two trees. Species will be determined by the Contract Administrator.
- 1.10 HAZARDOUS WASTE OR MATERIALS
- Should the contractor encounter hazardous waste or hazardous materials he shall stop work immediately and notify the Contract Administrator.

## SECTION 02510 - ROADS, SIDEWALKS & APPURTENANCES

### 1. INTENT

This section covers the work for the construction and/or rehabilitation of hot-mix and/or Superpave asphalt, gravel pavements, sidewalks and walkways, curb and gutter, and other surface works.

#### 1.1 INSPECTION AND TESTING

##### 1.1.1 Responsibility for Testing

Provide samples of all materials for testing.

Arrange for testing of granular materials and concrete as outlined in each applicable section. All testing will be carried out by certified testing laboratories.

### 2. PRODUCTS

#### 2.1 AGGREGATES

General – OPSS 1001

Concrete Aggregates – OPSS 1002

Miscellaneous – OPSS 1004

Granular Base, Subbase, Select Subgrade and Backfill Material – OPSS 1010

5/8" Crushed Stone – OPSS 1010 with the following gradation:

	<u>Sieve Size</u>		<u>Percentage Passing by Weight</u>
	5/8"	(16.0 mm)	100
	1/2"	(13.2 mm)	75 – 95
	3/8"	(9.5 mm)	50 – 80
No.	4	(4.75 mm)	25 – 50
No.	16	(1.18 mm)	10 – 40
No.	50	(300 um)	2 – 20
No.	200	(75 um)	0 - 5

#### 2.2 CONCRETE

OPSS 1350

- minimum 32 MPa with 5-8% air entrainment
- exposure class C-2

- no chemical admixtures
- hot water to be used for concrete after October 1

2.3 CALCIUM CHLORIDE  
OPSS 2501

2.4 STEEL REINFORCING MESH FOR DRIVEWAYS  
M.W.13.3 / M.W.13.3, 152 m x 152 m openings.

2.5 CULVERTS  
OPSS 1801

2.6 TACTILE PLATES  
Unpainted cast iron, sizes vary to suit ramp radius configuration. D & L Foundry or Neema or approved equal.

### 3. EXECUTION

3.1 RESTORING UNPAVED SURFACE

OPSS 301

3.2 ASPHALT SIDEWALK, BOULEVARD, DRIVEWAY OR PATHWAY

OPSS 311

3.3 CONCRETE SIDEWALKS

OPSS 351

Schedule the placement of the concrete in such a manner that it follows very closely behind the excavation and backfilling procedure. Concrete placement shall not be closer than 20m of areas being prepared and compaction equipment used.

Apply curing compound in accordance with the manufacturer's recommendations.

Replace any sections damaged by rain, traffic or other causes, prior to final acceptance of the work.

Trim or support hedges, bushes or other plants, which may be affected by the construction, as directed by the Contract Administrator. Cover any exposed roots with suitable fill immediately following excavation and/or provide root curtain.

Install tactile plates where specified. Some field cutting may be required. Protect surface from concrete spray over.

Apply concrete penetrating saline sealer to any sidewalk impacted by rain or freezing temperature, cold weather work placement for scaling protection as directed by the Contract

Administrator.

### 3.4 CONCRETE CURB AND GUTTER SYSTEMS OPSS 353

When concrete curb and gutter is placed by the extrusion method, form contraction joints by saw cutting the hardened concrete within a sufficient time of placing of the curb and gutter to prevent uncontrolled cracking. Contraction joints may also be formed using a “guillotine” knife in the wet concrete.

The width of the joint shall be 3mm to 5mm and the depth 65mm minimum, at 6.0 metre maximum spacing.

Retain a minimum distance of 20m between any grading or compaction operations and the placement of new curb and gutter.

### 3.5 BACKFILL BEHIND CURB

Backfill along the paved edge of the gutter with wet and solidly compacted Granular B fill and crushed gravel. Backfill behind curbs immediately after curing and prior to placing granular road base.

### 3.6 ACCESS TO BUSINESSES

Maintain access to all businesses where they abut the work area.

### 3.7 RECONSTRUCTION OF ASPHALT DRIVEWAYS

Remove and reconstruct driveways as required and as directed by the Contract Administrator. This reconstruction shall be equal to or better than the original construction. Excavate for, supply, and compact at least 150mm Granular A, and at least a 50 mm course of HL 4 asphalt concrete. Where the existing driveways have driveway sealer, the Contractor shall supply and install one (1) coat of coal tar epoxy driveway sealer.

### 3.8 RECONSTRUCTION OF EXISTING CONCRETE DRIVEWAYS

Remove and reconstruct existing concrete driveways as shown on the Contract Drawings and as directed by the Contract Administrator. Provide a driveway equal to or better than the original construction except that in no case shall the thickness be less than 125 mm. Excavate for, supply, and compact at least 150mm Granular A under the concrete. Reinforced with M.W. 13.3/M.W. 13.3 wire, 152 mm x 152 mm, opening wire mesh.

### 3.9 RECONSTRUCTION OF GRAVEL DRIVEWAYS

Remove and reconstruct driveways as shown on the Contract Drawings and as directed by the Contract Administrator. This reconstruction shall be equal to or better than the original

construction. Excavate for, supply, and compact at least 150 mm Granular A.

### 3.10 RECONSTRUCTION OF BOULEVARDS

Remove vegetation to the limits as shown on the Contract Drawings and as directed by the Contract Administrator. This reconstruction shall be equal to or better than the original construction. Excavate for, supply, and compact at least 100mm topsoil or at least 150mm of Granular A and 50mm HL4 as indicated on the Contract Drawings.

### 3.11 RECONSTRUCTION OF FENCING

Remove and reconstruct and/or permanently or temporarily relocate fencing as required to facilitate the Work. This reconstruction shall be equal to or better than the original construction.

### 3.12 EXISTING SIGNS

Where existing street signs, stop signs, traffic signs, etc. are to be relocated, remove the signs and, except for stop signs, place the signs out of the way of work so that they will not be damaged. Any stop sign which has to be removed in order to carry out construction shall be relocated in an alternate position by the Contractor as directed by the Contract Administrator. Such relocation of stop signs shall be done so as not to confuse or mislead motorists. The Contractor will be back charged for the cost of any missing or damaged signs upon completion of the work. Include the costs for relocation and reinstatement of signs in the tender items – no additional payment will be made.

### 3.13 ADJUST EXISTING MANHOLE FRAMES, CATCHBASIN FRAMES AND CURB AND VALVE BOXES

Adjust existing manhole (including electrical and telephone manholes) and catchbasin frames and curb and valve boxes and curb stops to suit finished pavement grades.

Use precast concrete rings or modify masonry as necessary to adjust the grade at manhole and catchbasin frames.

### 3.14 REMOVAL OF PAVEMENT

OPSS 510

## 4. MEASUREMENT FOR PAYMENT / BASIS OF PAYMENT

### 4.1 GENERAL

Payment for all items shall be full compensation for all labour, equipment, and materials to complete the work.

## 4.2 CONCRETE SIDEWALKS AND CONCRETE DRIVEWAYS

OPSS 351, except as follows.

The unit price bid for sidewalk and driveways shall include all costs of constructing or reconstructing sidewalk drops and entrance drops and shall apply regardless of the type of sidewalk or driveway placed.

Payment for the grading and granular base and subbase material is to be included in the sidewalk and driveway item.

Payment for tactile warning plates is per each location (if applicable).

## SECTION 02520 – EXCAVATION AND GRADING

### 1. INTENT

This section covers excavation, grading, filling and compaction for sidewalks, boulevards, driveways, laneways and adjacent areas.

#### 1.1 RELATED WORK SPECIFIED ELSEWHERE

Related work specified elsewhere includes:

Section 02510 – Roads, Sidewalks & Appurtenances  
Section 02930 – Landscaping

### 2. PRODUCTS

Borrow Material – OPSS 212

Boulevard fill must be free of stones, boulders, debris, clay or granular material.

### 3. EXECUTION

#### 3.1 CLEARING AND TREE REMOVAL

OPSS 201, except the Contractor is responsible for the disposal of the trees, stumps, roots, etc.

#### 3.2 EXCAVATION, FILLING AND GRADING OPSS 206

Grading templates will be provided to the successful contractor.

#### 3.3 REMOVAL OF EXISTING CURBS, GUTTERS, DRIVEWAYS, INTERLOCKING CONCRETE PAVERS AND SIDEWALKS

Remove the lengths of curb, gutter, sidewalk, precast pavers and driveways as indicated on the drawings and as designated by the Contract Administrator. Dispose of all materials removed.

All removed concrete shall become the property of the Owner, and the Contractor shall be responsible for its delivery to a designated site within the Town limits as directed by the Contract Administrator. The Contractor shall be responsible to level off the disposed concrete at the disposal site before the end of the year, prior to snowfall.

Saw cut the limits of the work prior to commencing the removal. Saw cutting of existing asphalt

or concrete driveways should be done after the sidewalk is poured to determine proper grade. The Contractor shall cut driveways initially for rough grade for excavation and a second cut is required for final matching to grade.

Remove sidewalk foundation walls, if encountered.

### 3.4 GRADING SIDEWALKS AND BOULEVARDS

Slope sidewalks, walkways and boulevards as required to ensure the new sidewalk grades match existing property line grades. Grade new sidewalks and boulevards to ensure positive drainage away from existing property lines.

### 3.5 SALVAGE

Deliver old manhole and catch basin frames and covers, culverts, and precast pavers to the Town's yards.

## 4. MEASUREMENT FOR PAYMENT / BASIS OF PAYMENT

### 4.1 EXCAVATION, FILLING AND GRADING

Measurement for payment shall be by the Plan Quantity Payment.

#### 4.1.1. Water

All water required for compaction or dust control shall be obtained from a surface water source. Unless specifically indicated in the Tender Form, the Contractor shall include the cost of using water for compaction and dust control in the unit cost of excavation or granular items.

### 4.2 REMOVAL OF CURBS, GUTTERS, DRIVEWAYS AND SIDEWALKS

The unit price bid for these items shall apply both to spot removals or removals of lengthy sections, based on those sections designated to be removed by the Contract Administrator.

No additional payment shall be made for the removal of foundation walls, if found beneath existing sidewalks.

## SECTION 02930 – FINISH GRADING AND SEEDING

### 1.0 GENERAL

#### 1.1 INTENT

A. This Section covers the Work for Finish Grading and Seeding including:

1. Preparation of subgrade
2. Preparation of finish grade
3. Fertilizer
4. Topsoil
5. Seed and Cover
6. Watering
7. Maintenance.

B. Products installed under this Contract but furnished by others are as follows: NA

C. Work not included in this Contract is as follows: NA

#### 1.2 PROCEDURE

A. Determine the related Work requirements of the other trades and assume the responsibility of informing and co-operating with those trades.

B. Report to the Engineer, in writing, the conditions or defects encountered on the site during or before construction upon which the Work of this Section depends, and which may affect its performance.

C. Commencement of the Work implies acceptance of surfaces and conditions and no claim for damages or extras resulting from such conditions will be accepted thereafter, except in cases where such conditions could not have been known prior to or during construction.

#### 1.3 DAMAGE TO EXISTING TREES AND SHRUBS

A. Take precautions to prevent damage to existing trees and shrubs, protect branches and foliage, protect trunks and stems, prevent machinery from travelling over roots within the 'drip-line' of the trees.

- B. Where damage does occur, prune damaged area and provide tree dressing and burlap binding as acceptable to the Engineer.
- C. Where trees or shrubs are damaged beyond recovery and cannot be replaced by similar plant material of the same type and size, pay penalties as established by the International Society of Arboriculture's booklet entitled 'A Guide to Professional Evaluation of Landscape Trees, Specimen Shrubs and Evergreens'.

#### 1.4 EXISTING UTILITIES

- A. Contact the various utility authorities prior to commencing Work and become informed of the exact location of utilities. Protect them during construction and assume liability for damage to utilities.
- B. Utilities that require relocation will be the responsibility and at the expense of the utility authority concerned. Co-operate with the utility companies and always provide them with free access to their plant.
- C. Where existing overhead pole lines are adjacent to the excavation, protect and temporarily support them to the satisfaction of the utility authority concerned.

#### 1.5 EXISTING DRAINAGE

- A. Maintain temporary and permanent flow in sewers, drains, gutters, ditches, watercourses, and inlet connections.

#### 1.6 AREAS TO RECEIVE FINISH GRADING AND SODDING

- A. Fine grade, spread topsoil and sod all areas within the contract limits that are not designated for paving.
- B. Fine grade, spread topsoil and sod all existing grass areas that are disturbed beyond the contract limits.

#### 1.7 HANDLING AND STORAGE

- A. Store topsoil on site where directed by the Engineer
- B. Deliver fertilizer in standard containers, clearly marked with the name of the manufacturer, weight and analysis.
- C. Where the fertilizer is supplied in bulk, submit a statement to the Engineer indicating the same information as if it had been supplied in standard containers.
- D. Store materials subject to deterioration by weather or other causes on site in a dry, weatherproof place in a manner so the effectiveness is not impaired.

1.8 WEATHER AND SEASONAL CONDITIONS

- A. Proceed with the Work only in calm weather and on ground free of frost, snow, ice or standing water.
- B. Do not perform the Work when wind conditions are such that material would be carried beyond the areas designated for the Work, or the material would not be applied uniformly.
- C. Notify the Engineer a min. 7 days in advance of the proposed starting dates for the Work.
- D. Do not start the Work without the consent of the Engineer.

1.9 SUBSTITUTIONS

- A. Substitutions will not be allowed unless accepted in writing by the Engineer.
- B. Give 3 weeks prior notice in writing to the Engineer when applying for substitutions.
- C. Submit to the Engineer, in writing, requests for price adjustments due to the substitutions.

1.10 WATERING

- A. During the Work up to the date of acceptance use supplied water and provide and operate a water distribution system adequate to sustain growth.

1.11 INSPECTION

- A. Give 7 days prior notice in writing to the Engineer when all Work is complete.
- B. Inspection for acceptance will be conducted within 30 days after completion for fine grading and seed.
- C. Inspection for partial acceptance will be conducted only when partial acceptance applies.
- D. When the Contractor requests inspection for partial acceptance inform the Engineer in writing.
- E. Partial acceptance will be given when the Work has been delayed due to circumstances beyond the Contractor's control or when further Work would not be in accordance with good horticultural practice and would thus jeopardize the performance of Work and products.
- F. At the time of inspection for acceptance of seeded areas, provide a healthy even stand of grass free of thin, poor or burned out patches not more than 63 mm (2 1/2 in.) in height.

1.12 GUARANTEE

- A. Re-seed areas which, during the Guarantee Period, shows deterioration, or damage resulting from faulty products or workmanship.

1.13 MAINTENANCE

OPSS 803

- A. Maintain seeded areas until the later of the date of acceptance of the Work of the entire Contract, or for thirty (30) days following completion of placement. If the thirty days extends after October 15<sup>th</sup>, the portion of the period after October 15<sup>th</sup> will continue the following year after May 15<sup>th</sup>.
- B. Take measures necessary to establish and maintain seeded areas in an acceptable healthy growing condition including -
  - 1. Mowing - at regular intervals as required, to maintain grass at a 63 mm (2 1/2 in.) max. height. Do not cut more than 1/3 of blade at any one mowing. Neatly trim or hand clip edges of sodded areas where necessary. Remove clippings and trimmings after mowing and trimming immediately.
  - 2. Watering - carry out when required and with sufficient quantities to prevent grass and underlying soil from drying out.
  - 3. Rolling - carry out when required to remove minor depressions or irregularities.
  - 4. Weed Control - carry out when required. Apply herbicides in accordance with manufacturer's instructions. Repair damage resulting from use of herbicides.
  - 5. Repair resulting from erosion faulty workmanship or products immediately upon notification of the Engineer.
  - 6. Repair immediately the sodded areas that show deterioration or bare spots.
  - 7. Adequately protect with warning signs, the sodded areas unless specified otherwise.

1.14 RESPONSIBILITY

- A. Take care to prevent damage and contamination of structures, signs, rails, fences and utilities. Where such damage and contamination occurs, take remedial measures to the satisfaction of the Engineer.
- B. Take precautions to ensure the fertilizer in solution does not come in contact with the foliage of trees, shrubs, ground cover and vines. Should contamination occur, immediately spray the affected vegetation with water to remove the contamination.
- C. Repair or replace damage to planting by qualified persons when notified by the Engineer.

## 2.0 PRODUCTS

### 2.1 GENERAL

- A. Conform to latest edition of Reference Standards.

### 2.2 TOPSOIL

OPSS 802

- A. Topsoil - fertile, friable natural loam containing 4 percent organic matter for clay loams and 2 percent min. organic matter for sandy loams with acidity range of 6.0 pH to 7.5 pH and capable of sustaining vigorous plant growth, free of admixture of subsoil, clay lumps and from stones and roots over 50 mm (2 in.) in dia. and other foreign matter.

### 2.3 FERTILIZER

OPSS 803, 804

- A. Provide fertilizer to eliminate deficiencies in the topsoil as made evident by the testing.
- B. For the purpose of tendering use the following mixtures -

Nitrogen	Phosphoric Acid	Potash (K)
8	16	16 at 4.5 kg/100 sq. metres

Above ratios are subject to adjustment by the Engineer upon receipt of the soil analysis report.

### 2.4 SEED AND COVER OPSS 804

Seed to match sod type.

Hydraulic Mulch Cover

### 2.5 WATER

OPSS 1302

- A. Provide water clear and free of impurities that would inhibit germination or otherwise adversely affect growth.

## 3.0 EXECUTION

OPSS 802, 803, 804

### 3.1 PREPARATION OF SUBGRADE

- A. Scarify the subgrade to a min. depth of 75 mm (3 in.) to produce an even, loose textured

surface, free of stones, roots, branches and live weeds.

- B. Have the scarified subgrade inspected by the Engineer prior to placing the topsoil.
- C. Where the subgrade has been established by others verify the elevations, make adjustments if necessary, then prepare the subgrade in the manner described above.

### 3.2 PREPARATION OF FINISH GRADE / TOPSOIL

OPSS 802

- A. Spread the topsoil evenly over the accepted subgrade to bring the finished grade to the elevations shown on the Drawings. Min. depth 100 mm (4 in.). Compact to 80-85 percent Standard Proctor Density. Provide a smooth, fine textured finish surface.
- B. Work the fertilizer into the topsoil by discing, raking or harrowing to provide a smooth, fine textured finish surface.
- C. For the purpose of tendering, base quantities of fertilizer on the following minimum rates :

Nitrogen	Phosphoric Acid	Potash (K)
8	16	16 at 4.5 kg/100 sq. metres

Above rates are subject to adjustment upon receipt of soil analysis report from the Contractor.

- D. Lay seed within 48 hrs. of working the fertilizer into the topsoil.

### 3.3 PLACING SEED

OPSS 804

Top dress, fertilize, and over seed all sparse areas to obtain substantial growth throughout the warranty period.

### 3.5 CLEAN-UP

Promptly as the Work progresses and upon completion clean-up and remove from the site excess material generated by this Work.

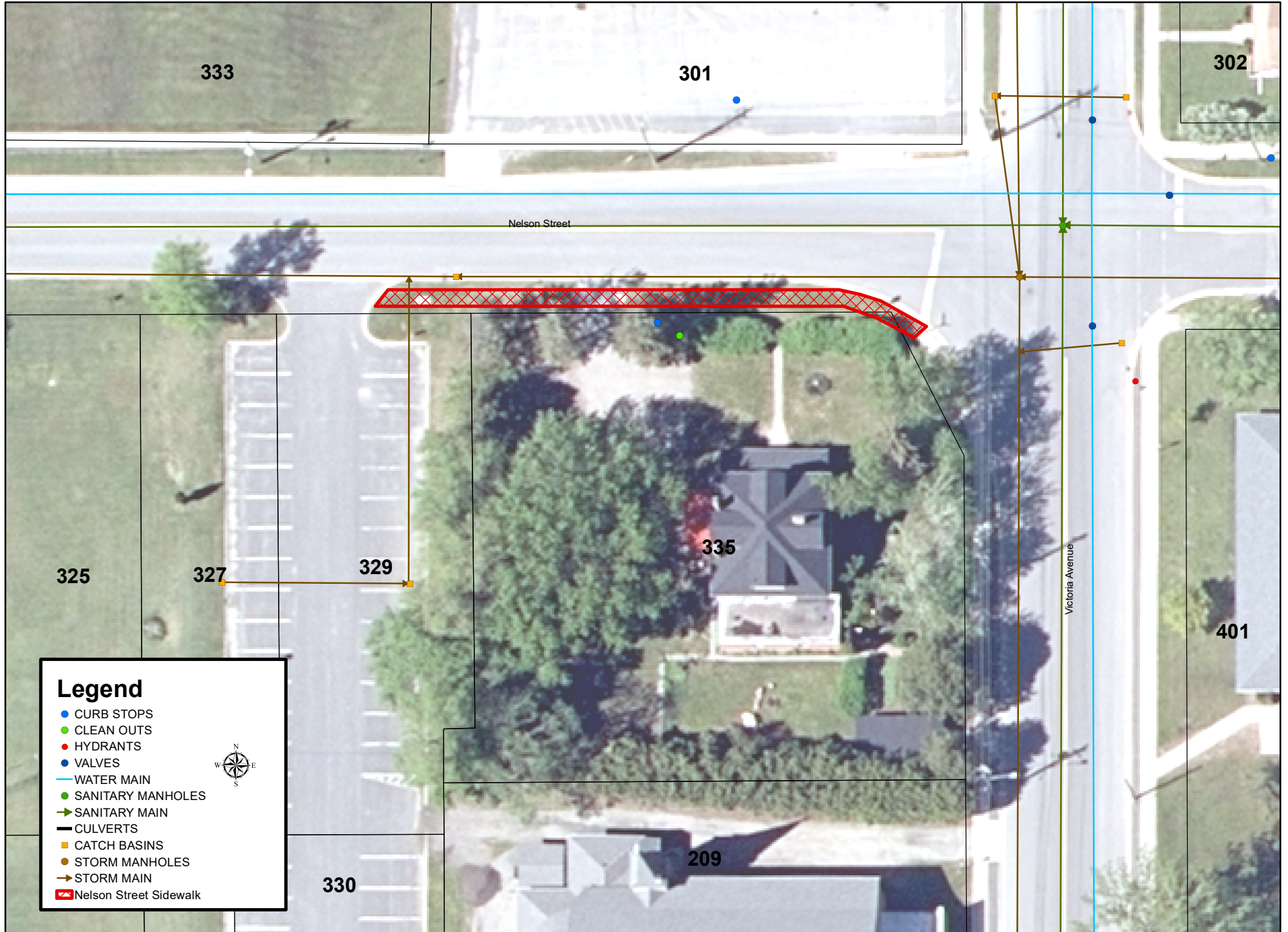
### 4.0 MEASUREMENT FOR / BASIS OF PAYMENT SEED AND COVER

OPSS 804, except the unit price bid for this time shall include the cost of fine grading and supply and placement of topsoil.

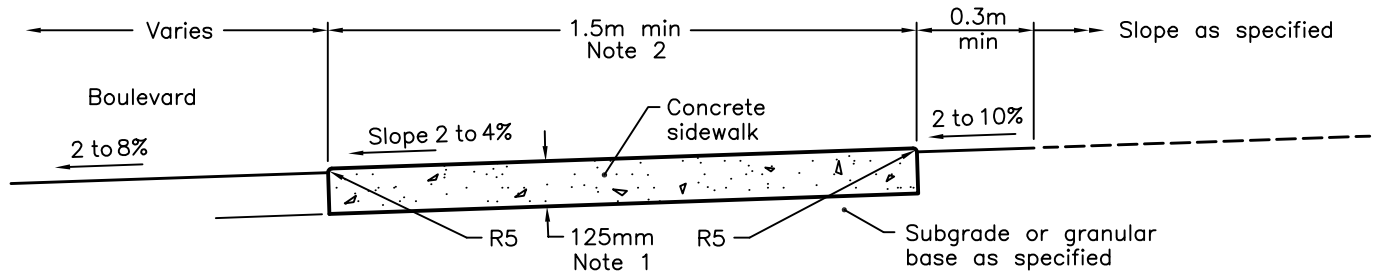
Measurement for the applicable shall be by area in square metres following the contours of the ground.

<b>Nelson Street Sidewalk Construction</b>					<u>Unit Bid Price</u>	<u>Total Bid Price</u>
E.002	351	Concrete Sidewalk	81	m <sup>2</sup>		
E.003	353	Concrete Curb and Gutter	3	m		
E.004	510	Removal of Concrete Curb & Gutter	3	m		
E.006	802	100mm Top Soil & Seed for Boulevards	108	m <sup>2</sup>		
E.007	351	Tactile Plates (Per Location)	1	ea		
<b>TOTAL NELSON STREET SIDEWALK CONSTRUCTION</b>						
					Contengency Allowance	\$5,000
					HST	\$
					TOTAL BID PRICE	\$

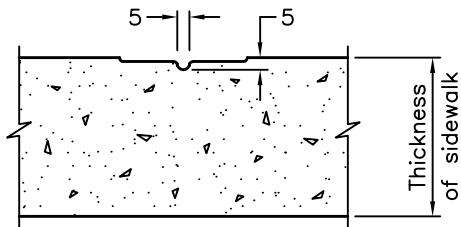
# Nelson Street Sidewalk Construction



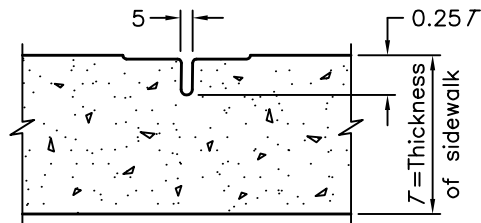
\* INCLUDES MATERIAL (c) 2022 OF THE KING'S PRINTER FOR ONTARIO. ALL RIGHTS RESERVED.



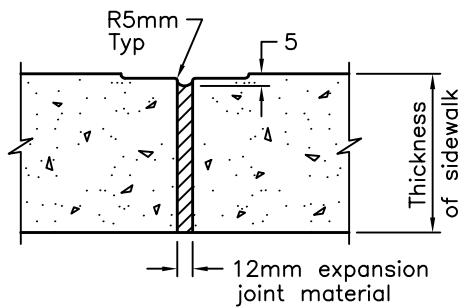
**TYPICAL SECTION**



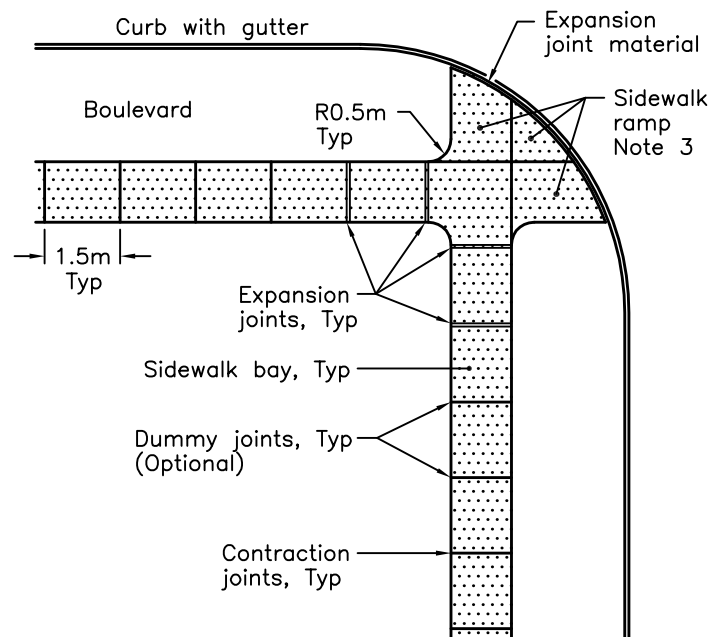
**DUMMY JOINT (OPTIONAL)**



**CONTRACTION JOINT (Note 4)**



**EXPANSION JOINT**



**JOINT LAYOUT**

**NOTES:**

- 1 Sidewalk thickness at residential driveways and adjacent to curb shall be 150mm. At commercial and industrial driveways, the thickness shall be 200mm.
- 2 Sidewalk width shall be wider when specified.
- 3 This OPSD shall be read in conjunction with OPSD 310.030, 310.031, 310.033, and 310.039.
- 4 Contraction Joint may be tooled or sawcut.
- A All dimensions are in millimetres unless otherwise shown.

ONTARIO PROVINCIAL STANDARD DRAWING

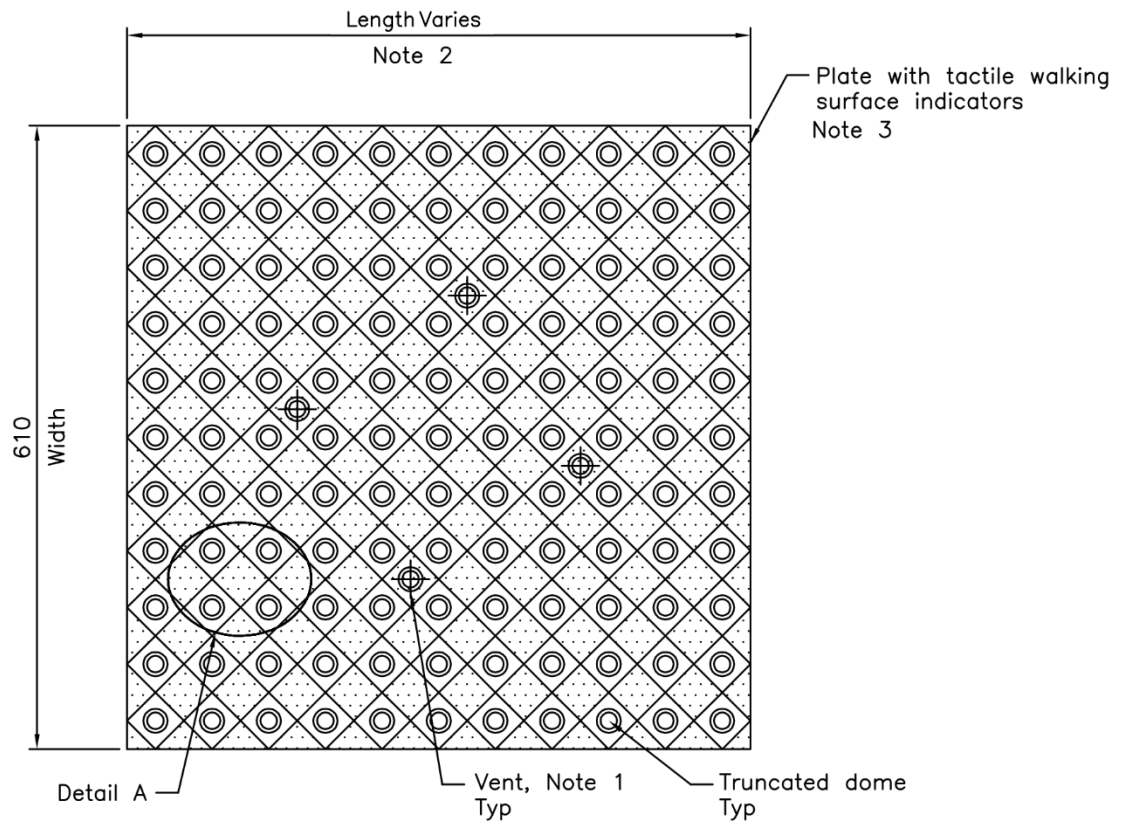
Nov 2019

Rev 3

CONCRETE SIDEWALK



OPSD 310.010

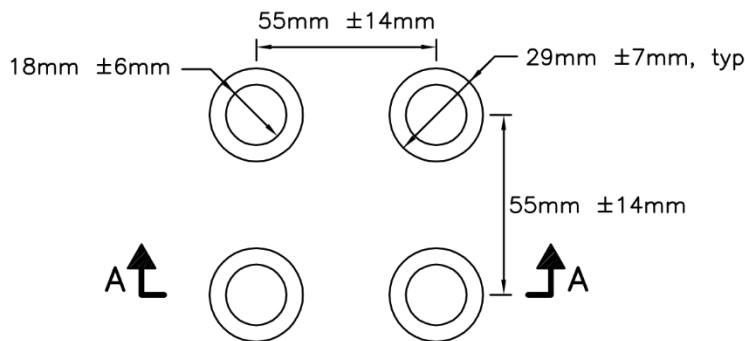


**PLAN**

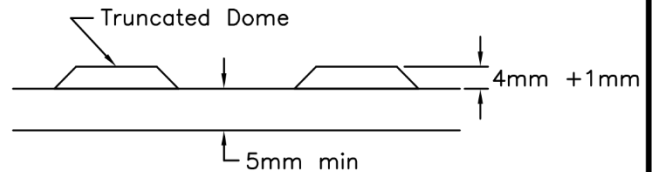


**ELEVATION**

Ribs as specified by manufacturer



**DETAIL A  
TRUNCATED DOMES PLAN**



**SECTION A-A**

**NOTES:**

- 1 Vents shall be as specified by the manufacturer.
- 2 Length of plate may be increased to suit the curb depression width.
- 3 Material of plate shall be as specified in Contract Documents.
- A Adjacent cast iron plates shall be permanently connected using a locking mechanism and any hardware shall be hot dipped galvanized.
- B All dimensions are in millimetres unless otherwise shown.

ONTARIO PROVINCIAL STANDARD DRAWING

Nov 2019 | Rev | 1

**CONCRETE SIDEWALK RAMPS TACTILE  
WALKING SURFACE INDICATORS  
COMPONENT**



**OPSD 310.039**